



# Recology: A World Without Waste™



# Recology Sonoma Marin

---

- Started operations  
December 23, 2017
- Employee owned company -  
460 local employees
- Part of Teamsters Union 665





# Service Area

---

- Recycle, compost, garbage, C&D, street sweeping, and recycle processing services
- 155,000 customers
  - 145,500 residential
  - 9,500 commercial



# Mission

---

- Reduce tons sent to landfill
- Recover resources

**BEFORE**



**AFTER**



# Get Pumped!

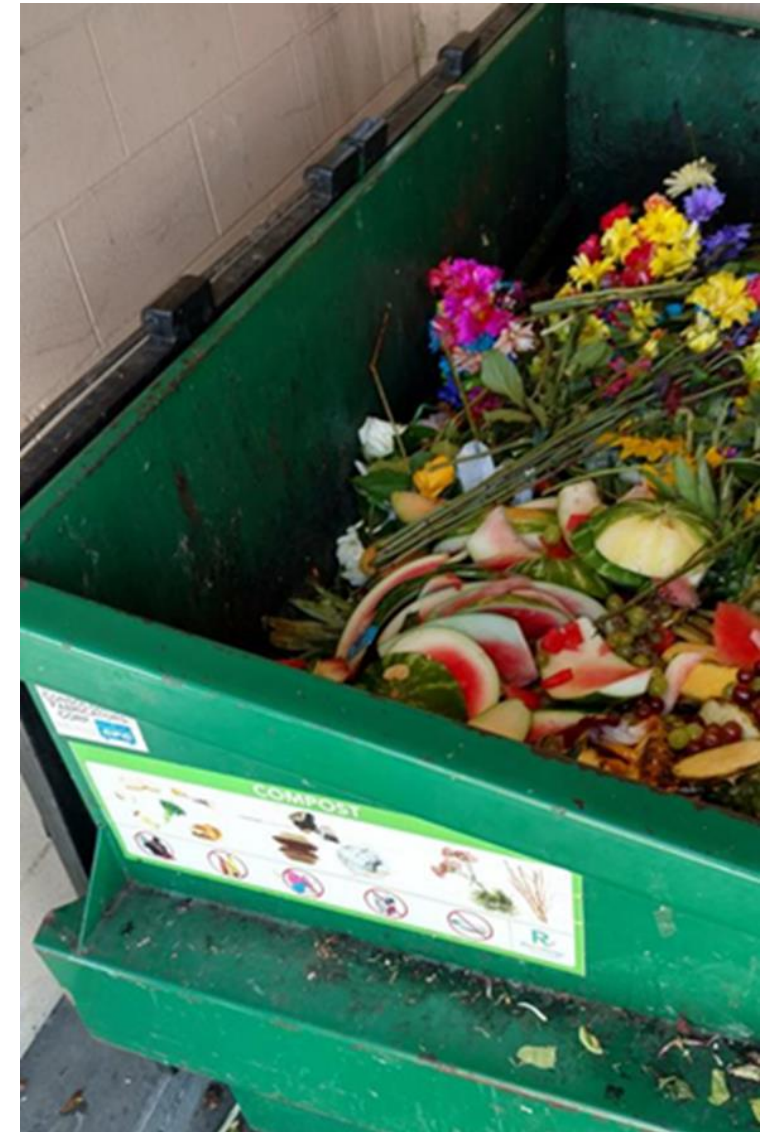
---



# CA Compost & Recycle Laws

---

- Mandatory Commercial Recycle (AB 341)
  - Effects 4+ cubic yards solid waste/week
- Mandatory Compost (SB 1383)
  - Builds off of AB1826
  - Requires residents & businesses to compost
  - 75% reduction in landfilled organics by 2025 (from 2014 level)
  - 20% increase in edible food recovery by 2025



# COMPOST COMPOSTA



**FOOD SCRAPS**  
RESTOS DE COMIDA



**UNCOATED SOILED PAPER & WOODEN UTENSILS**  
PAPEL SUCIO SIN RECUBRIMIENTO Y UTENSILIOS DE MADERA



**PLANT TRIMMINGS**  
DESECHOS DE JARDÍN



**RECYCLABLES**  
RECICLABLES



**PLASTIC**  
PLÁSTICO



**"COMPOSTABLE" PLASTICS**  
PLÁSTICOS "COMPOSTABLES"



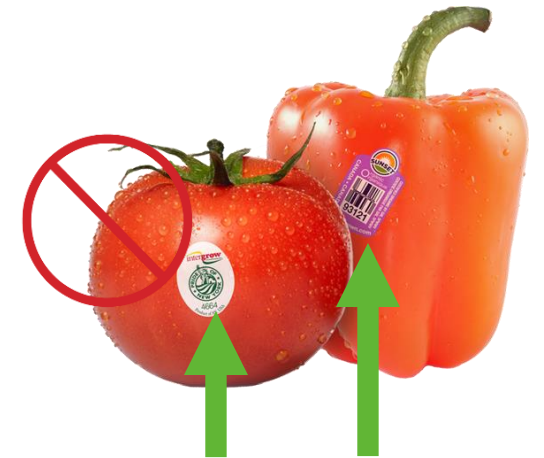
**PPE OR MEDICAL WASTE**  
EPP NI DESECHOS MÉDICOS

**LOOK IT UP**





# Contamination





Compost sequesters carbon from the atmosphere and reduces methane.

# Compost Process

---



# RECYCLE *RECICLAR*



**CARTONS, PAPER, AND CARDBOARD**  
*CARTONES, PAPEL, Y CARTÓN*



**METAL**  
*METAL*



**GLASS**  
*VIDRIO*



**PLASTIC BOTTLES, TUBS, AND JUGS**  
*BOTELLAS, BALDES, Y JARRAS DE PLÁSTICO*



**FOOD**  
*COMIDA*



**HAZARDOUS OR ELECTRONIC WASTE**  
*RESIDUOS PELIGROSOS O ELECTRÓNICOS*



**SINGLE-USE PLASTIC**  
*DE UN SOLO USO EL PLÁSTICO*



**PPE OR MEDICAL WASTE**  
*EPP NI DESECHOS MÉDICOS*

**LOOK IT UP**





Recyclables are sorted, baled, and made into new items.

# Contamination

- Plastic bags, hoses, etc. get caught in the spinning discs of the sorting equipment
- Liquids & food waste contaminate paper & cardboard



# NEW Material Recovery Facility (MRF)

---

- \$35 million project
- Opened Nov. 2023
- Process 400 tons/day
- 7 optical sorters
- Recovery rate 85% - one of the highest in the U.S.
- Take the [Virtual Tour](#)



# Come take a MRF Tour! [Recology.com/rsmMRF](https://www.recology.com/rsmMRF)





# Recology.com/RSMWhatBin

The screenshot shows the Recology website's 'WhatBin' tool. At the top, there is a navigation bar with a search icon, the Recology logo (WASTE ZERO), and links for CONTACT, FAQ, CAREERS, and PAY MY BILL. Below this is a secondary navigation bar with links for OUR VISION, CUSTOMER SERVICE, LOCATION, IN MY COMMUNITY, HELPFUL RESOURCES (highlighted), NEARBY LOCATIONS, MY RECOLOGY, and RECOLOGY-SAN FRANCISCO. A language dropdown is set to English and a share icon is visible.

The main heading is 'WhatBin'. Below it, a prompt reads: 'Use the search bar to type in the item you want to dispose of, and we'll tell you where it goes.' A search bar contains the text 'napkin' and a 'SEARCH' button.

Four disposal categories are shown: COMPOST, RECYCLING, LANDFILL, and OTHER. Each category has a corresponding bin icon: a green compost bin, a blue recycling bin, a grey landfill bin, and a white bin with a red question mark.

The result for 'napkin' is displayed as: **PLEASE PUT PAPER NAPKINS IN THE COMPOST**. Below this text is an image of a crumpled brown paper napkin.

# LANDFILL *BASURA*



**POLYSTYRENE FOAM**  
*FORMA DE PLIESTIRENO*



**SINGLE-USE PLASTIC**  
*PLÁSTICO DE UN SOLO USO*



**PPE**  
*EPP*



**DIAPERS AND PET WASTE**  
*PAÑALES Y DESECHOS DE MASCOTAS*



**FOOD**  
*COMIDA*



**HAZARDOUS OR ELECTRONIC WASTE**  
*RESIDUOS PELIGROSOS O ELECTRÓNICOS*



**RECYCLABLES**  
*RECICLABLES*



**MEDICAL WASTE**  
*DESECHOS*

**LOOK IT UP**



# Hazardous Waste

---

- Do not dispose of in Garbage, Recycle, or Compost
- Residential customers - tape the battery terminals and place them in a sealed bag on top of recycling cart



Learn more at:  
[ZeroWasteSonoma.gov](https://ZeroWasteSonoma.gov)

# Reduce & Reuse

---





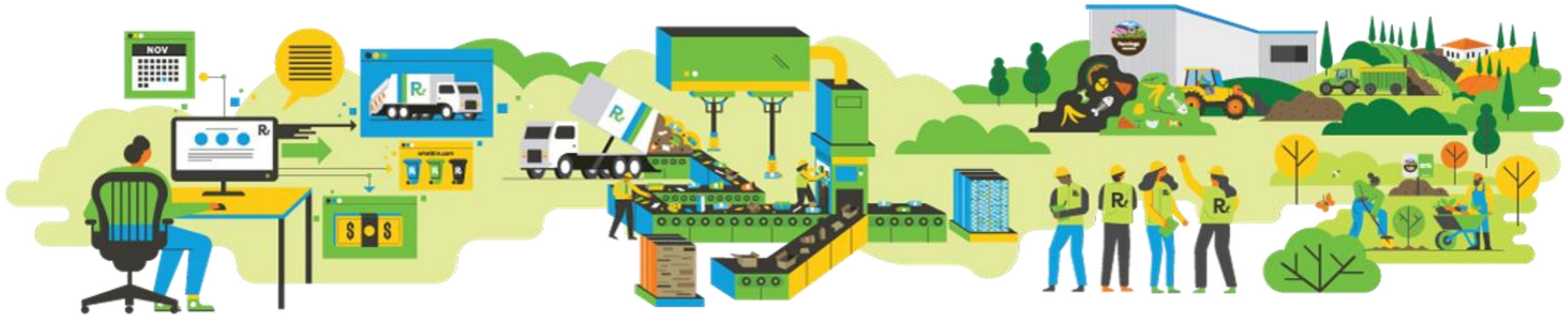
“We don’t need a handful of people doing zero waste perfectly. We need millions of people doing it imperfectly.”

*- Anne Marie Bonneau  
Zero Waste Chef*

# Questions?

---

- [Recology.com/SonomaMarin](https://www.recology.com/SonomaMarin)
- [Facebook.com/ RecologySonomaMarin](https://www.facebook.com/RecologySonomaMarin)
- [RSMWasteZero@Recology.com](mailto:RSMWasteZero@Recology.com)



# Garbage





# Recycle







# Garbage





# Compost



# Recycle



# Garbage





# Garbage





# Compost



# Garbage





# Recycle







# Compost

