



THE CONNECTION

Keeping Us Connected to the Communities We Serve



Recology will provide regular collection service on Thanksgiving Day.
Please remember to set out your carts by 6 AM.

2024-25 Holiday Collection Schedule

MONDAY	TUESDAY	WEDNESDAY	THURSDAY	FRIDAY	SATURDAY
12/23 Regular Service	12/24 Regular Service	12/25 No Service Christmas Day, Office Closed	12/26 Service for Wednesday Customers	12/27 Service for Thursday Customers	12/28 Service for Friday Customers
12/30 Regular Service	12/31 Regular Service	1/1 No Service New Year's Day, Office Closed	1/2 Service for Wednesday Customers	1/3 Service for Thursday Customers	1/4 Service for Friday Customers

San Martin Transfer Station

Open Tuesday–Saturday, 8 AM – 4 PM. Hours subject to change without notice.
Closed on Thanksgiving, Christmas, and New Year's days.

UPCOMING EVENTS FOR GILROY RESIDENTS

MATTRESS DROP-OFF EVENT

Residents have an opportunity to recycle mattresses and box springs for free. No appointment necessary.

WHEN: October 26, 9 AM to Noon

WHERE: 1351 Pacheco Pass Hwy, Gilroy 95020

BRING: You must show a recent Recology bill and ID as proof of Gilroy residency.



Only mattresses and box springs (any size) will be accepted at this event.

There will be a charge to recycle mattresses and box springs if they are taken to the San Martin Transfer Station.

HOME COMPOSTING WORKSHOP

Learn how to compost at home by attending a free Community Composting Workshop organized by the University of California Cooperative Extension and the County of Santa Clara and taught by certified Master Composters.

WHEN: November 9, 10 AM to Noon

WHERE: Morgan Hill Community and Cultural Center, 17000 Monterey Road.

Visit <https://bit.ly/3HJdhs3> or call **408.918.4640** for more details and registration. Participants must be 18 or older.

CONTACT US!

Se Habla Español

Recology South Valley
 1351 Pacheco Pass Hwy
 Gilroy, CA 95020

408.842.3358
recology.com/southvalley
facebook.com/recologysouthvalley

OTHER RESOURCES

hhw.org
whatbin.com
reducewaste.org

HOLIDAY TREE RECYCLING

Recology accepts holiday trees for recycling! Flocked trees (sprayed with artificial snow) are not accepted.

1. Remove all decorations, tinsel, and tree stands.
2. Cut tree into three-foot sections.
3. Place small branches/pieces inside the cart.
4. Make sure your organics cart is at the curb alongside your tree.



WHY COMPOSTING MATTERS

CalRecycle estimates that more than 40% of the waste disposed in landfills could have been composted instead.



It's good for the planet. Composting food scraps, food-soiled paper, and plants improves our soils and reduces greenhouse gas emissions, which helps fight climate change.



It's the law. State and local laws mandate separating compostable materials from trash to reduce waste sent to landfill.



CURBSIDE COLLECTION



COMPOST FACILITY



FINISHED COMPOST

Learn more about the benefits of composting at [recology.com/sb1383](https://www.recology.com/sb1383).

FREQUENTLY ASKED

QUESTIONS

How should I dispose of leftover paint?

Don't toss it in your garbage or recycle cart! Instead, use the PaintCare program for free disposal.



For more information on guidelines and to find your local drop-off locations, visit [paintcare.org](https://www.paintcare.org).

What should I do if I have more cardboard than will fit in my recycle cart?

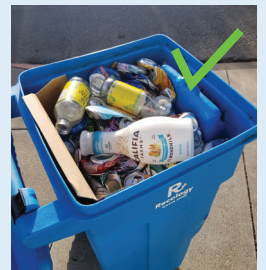


Cut the boxes into smaller pieces or flatten them so that they are no larger than 3' x 3' in size. Bundle them with twine or tape and set them next to your recycle cart for collection.

Is it OK to bag my recyclables?

When putting recyclables in your blue bin, keep them loose.

When recyclables are bagged, they can be mistaken as garbage and may end up in the landfill.



NEVER PLACE THESE ITEMS IN YOUR GARBAGE CAN

- Sharps and Medication
CVS Pharmacy, 408.842.0373
- Fluorescent Lamps
Ace Hardware of Gilroy, 408.847.5890

- Household Hazardous Waste and Electronic Waste
Call 408.299.7300