



# 2015-2016 Recycling Calendar & Service Brochure

## Service Reminders.....

### COLLECTION TIMES:

All carts must be placed curbside by 6am on your service day. Per City of Pacifica Ordinance #6-5.106, your carts should not be set out more than 12 hours in advance of pick-up nor left curbside for more than 12 hours after pick-up. Please be sure to pull your carts back from the curb once they are serviced.

We are not responsible for any articles left on or near collection containers.

### CONTAINERS:

We will not service ANY carts where the lids do not close completely. Please contact our office for more information at 650-355-9000.

### EXTRA GARBAGE:

Extra garbage must be bagged and arrangements made with our office in advance for pickup. **Extra Bag Tags** are available for a fee by calling **Recology of the Coast** at 650-355-9000. You may also schedule one of your bulky item collections. See page 8 for more information.

### MISSED COLLECTIONS:

Please report any missed collections to our office by the following business day to **avoid a return trip charge**. We have a 24 hour messaging service so if you call after hours, please leave a detailed message and a Customer Service Representative will address your missed collection the following day, Monday – Friday.

### RECYCLING THEFT:

It is illegal to remove recycling materials once they have been placed inside of a recycling cart. If you are a witness to this crime, please report it by calling the Pacifica Police business line at 650-738-7314.

### HOLIDAY SCHEDULE:

Your garbage, recycling and organics carts will be serviced on all holidays except for **Thanksgiving Day, Christmas Day and New Years Day**. If your service day falls ON these holidays, your carts will be serviced on the following Saturdays: November 28, 2015, December 26, 2015 and January

2, 2016. You will be allowed ONE (1) extra bag of garbage on these Saturdays ONLY at no charge (extra bag tag not required). If your service day falls AFTER these holidays, your pick-up will NOT be affected.

If you have questions, please call our Customer Service Department at 650-355-9000.

### CHRISTMAS TREE RECYCLING:

Christmas Trees will be collected at the curb on your regular organics collection day from **December 26 – January 31** and should be cut to 4 feet or less in length. Those trees not picked up during the month above should be cut up and put into your green cart. **Please remove all ornaments, tinsel, lights and stands. Flocked trees are ok.**



## Upcoming Events at the Recycling Yard – 1046 Palmetto Avenue, Pacifica

*Must show proof of residency in the City of Pacifica.*

### FREE SHREDDING EVENTS

January 23, 2016 & July 23, 2016

8:00am – 1:00pm  
(or until the truck is full)

Each resident may bring up to six (6) banker boxes of paper for free confidential shredding per event.

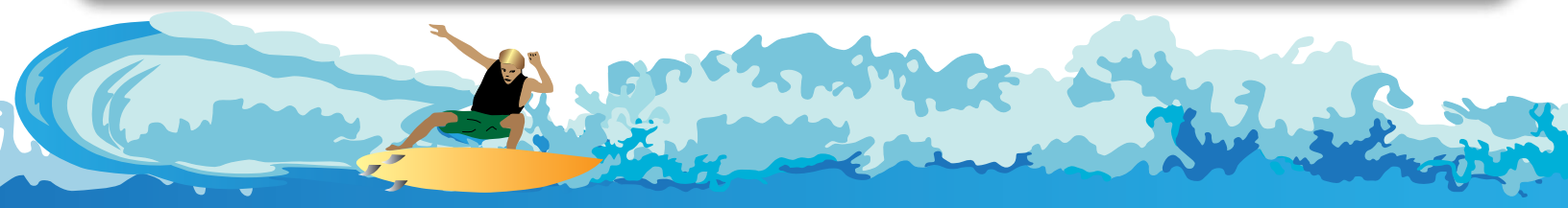


### COMPOST GIVEAWAYS

October 24, 2015, April 23, 2016  
and October 22, 2016

8:00am – 12:00pm (or until supply is gone)

Each resident may bring 2 – 30 gallon cans to collect compost. *Please note: Only cans will be filled, no boxes or bags.*



# Organics

The Organics Program allows you to mix green waste, food scraps and soiled paper products in the same **GREEN** cart.

**Your organics cart is emptied every week on your regular service day.**



**We are bag-free carts!**  
No biodegradable, compostable or plastic bags, please.

### ACCEPTABLE ITEMS:

- Food Waste**  
(i.e. bones, coffee grounds, fruit, meat, vegetables)
- Green Waste** (i.e. branches – cut to less than 3 feet in length and less than 3 inches in diameter, leaves, yard trimmings)
- Soiled Paper Waste** (i.e. coffee filters, paper milk cartons, paper plates & napkins, pizza boxes, tea bags)

### UNACCEPTABLE ITEMS:

- Ashes
- Cat litter
- Clothing
- Compostable or biodegradable bags
- Construction & Demolition (C & D) Debris (i.e. Sheetrock)
- Dirt, rock, concrete, brick, gravel
- Furniture
- Garbage
- Garden hose
- Non-recyclable items
- Pet & human excrement
- Photographs/negatives
- Plastic bags
- Recyclable items
- Sawdust
- Treated & painted wood
- Tree stumps

Your monthly service includes one (1) GREEN and (1) BLUE cart per pickup. If you need more service on a regular basis, you may rent an additional cart for a low monthly fee.

**REMINDER:** Please place your carts curbside by 6 a.m. on your regular service day for collection. In order for your carts to be emptied, make sure the lids are closed completely; debris may not be sticking out of the cart. If you have questions about the programs above or to inquire about renting additional carts, please call Recology of the Coast at 650-355-9000 or visit our website at [www.recologyofthecoast.com](http://www.recologyofthecoast.com).

# Single Stream Recycling

The Single-Stream Recycling Program allows you to put all your recyclables into the same **BLUE** cart!

**Your recycling cart is picked up every other week on your regular service day.** To find out your recycling schedule please refer to pages 6-7 of this brochure.



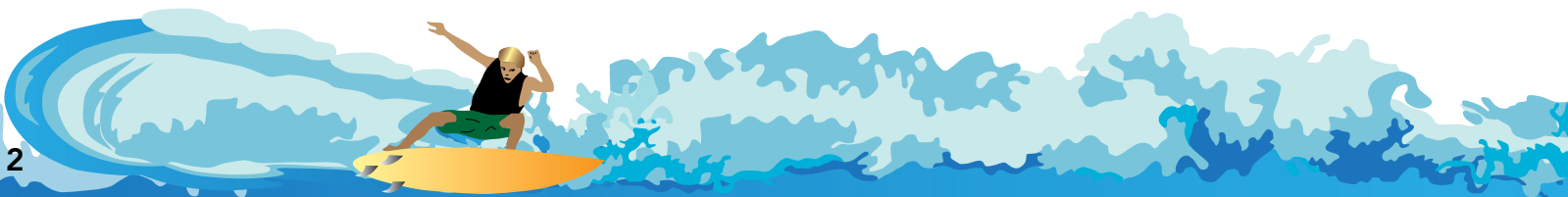
### ACCEPTABLE ITEMS:

- Aluminum** (i.e. soda cans, CLEAN aluminum foil)
- Aseptic Containers** (juice and soup boxes)
- Cardboard** (extra cut down to 3ft x 3ft)
- Glass Bottles & Jars**
- Mixed Paper** (colored, computer, magazines)
- Plastics** (bottles, containers #1-7, party cups, plastic cutlery, straws)

### UNACCEPTABLE ITEMS:

- Bubble wrap
- Clothing
- Food contaminated packaging
- Furniture
- Garden hoses
- Packing peanuts
- Paper towels, napkins, facial tissue
- Photographs/negatives
- Plastic bags
- Plate glass
- PVC pipes
- Styrofoam
- Unmarked plastics (plastics without the #1-#7 recycling symbol)

For recycling and reuse options of the materials listed above, please visit San Mateo County RecycleWorks at [www.RecycleWorks.org](http://www.RecycleWorks.org).



# Recyclopedia

The following is an alphabetical listing of items that can be disposed or recycled in or around the City of Pacifica. Items shown in **BOLD** are picked up curbside.

If you have any questions, please call **Recology of the Coast** at **650-355-9000** or visit **www.recologyofthecoast.com**.

**ALUMINUM FOIL** - Recycle cart (completely clean)

ANTIFREEZE<sup>1</sup> - Recycling Yard

APPLIANCES<sup>2</sup> - Recycling Yard

BATTERIES; auto, cell phone – Recycling Yard

**BATTERIES**; household – in sealed clear plastic bag on top of recycling cart

BICYCLES - Recycling Yard

**BRANCHES** - Organics cart (cut to less than 3 feet in length and less than 3 inches in diameter)

BRASS - Recycling Yard

BUILDING MATERIALS - See Debris Box Information on page 8

**CANS** - Recycle cart (aluminum, bimetal, tin)

**CARDBOARD** - Extra cardboard should be flattened and bundled 3ft x 3ft and placed next to your recycling cart - one bundle only

**CHRISTMAS TREES** - picked up curbside from December 28 – January 29, cut to 4ft in length or less. See page 1 for more information.

CLOTHING - Recycling Yard in USAgain drop-off box

**COMPUTER PAPER** - Recycle cart

CONCRETE - See Debris Box Information on page 8

COPPER PIPE AND WIRE - Recycling Yard

DIRT – Call the office for disposal options, 650-355-9000

**ELECTRONIC WASTE**<sup>2</sup> - Recycling Yard (Zip Drives, Speakers, Monitors, Keyboards, Printers, Fax Machines, Copy Machines, Power Cables, TVs, Typewriters, VCRs, Stereo Equipment, Cell Phones, Pagers)

<sup>1</sup> A five-gallon limit per household, per month may apply.

<sup>2</sup> A fee may be charged for items such as: Refrigerators, tires, etc.

**FLOWER POTS** - Recycle cart - plastic only

FLUORESCENT/CFL BULBS - Recycling Yard

**FOOD SCRAPS** – Organics cart. See page 2 for more details.

FURNITURE - Recycling Yard, On-Call Collection, Donate

GARDEN HOSE – Garbage cart

**GLASS CONTAINERS** - Recycle cart

**GREEN WASTE** - Organics cart. See page 2 for more details.

HOUSEHOLD HAZARDOUS WASTE (HHW) – see HHW information on page 5 or call The County of San Mateo at 650-363-4718 to schedule an appointment

**JUNK MAIL** - Recycle cart

LUMBER - see Wood

**MAGAZINES** - Recycle cart

MATTRESSES – Standard mattress/box spring only at the Recycling Yard. Futons, posturepedic, memory foam, etc are NOT accepted.

MOTOR OIL<sup>1</sup> - Recycling Yard

**NEWSPAPER** - Recycle cart

PAINT; latex and oil base<sup>1</sup> – See Household Hazardous Waste

**PAPER** - Recycle cart (colored, computer, mixed)

**PAPER BAGS** - Recycle or Organics cart

**PHONE BOOKS** - Recycle cart

PLASTIC BASKETS; berry & cherry tomato baskets - Pacifica Farmer's Mkt, Rockaway

**PLASTIC CONTAINERS** - (#1 - #7) Recycle cart or the Recycling Yard

PLASTIC BAGS – reuse when possible (i.e. to line garbage cans or picking up animal waste), no plastic bags in recycling cart or organics cart

PROPANE TANKS – Recycle Yard (empty tank with safety valve) or call The County of San Mateo at 650-363-4718 to schedule an appointment

SATELLITE DISHES - Recycling Yard or TV service provider

SHARPS - Recycling Yard. See page 5 for more details

SHEETROCK/DRYWALL - See Debris Box information on page 8

**SOILED PAPER PRODUCTS** - Organics cart

STYROFOAM PEANUTS – Garbage cart (bagged). Also can contact the Styrofoam Hotline: [www.loosefillpackaging.com](http://www.loosefillpackaging.com)

TIRES<sup>2</sup> - Recycling Yard

**TREE LIMBS, CUTTINGS** - Organics cart (cut to less than 3 feet in length and less than 3 inches in diameter)

VITAMINS - See Pharmaceutical Disposal on page 5

WOOD – Recycling Yard - Untreated, unpainted, unstained, lumber ONLY - NO pressed board, pressure treated or plywood accepted. NO tree branches, stumps, etc.

**YARD WASTE** - Organics Cart. See page 2 for more details.



# Recycle Yard

The **Recology of the Coast Recycle Yard** is located at 1046 Palmetto Ave, in Pacifica and is open Tuesday and Thursday 8 - 4 pm and Saturday 8-1 pm. Hours of Operation are seasonal.

For the current hours please visit our website at [www.recologyofthecoast.com](http://www.recologyofthecoast.com)

**The Recycle Yard is closed on the following holidays:**

- New Year's Day
- Martin Luther King Day
- President's Day
- Memorial Day
- 4th of July
- Labor Day
- Weekend of the Fog Festival
- Thanksgiving Day
- Christmas Day



**Items accepted at the Recycling Yard are:**

- Antifreeze<sup>1</sup>
- Appliances<sup>2</sup>
- Car and Household Batteries
- Cellular Phones
- Clothing (separate bag/box)
- Computers<sup>2</sup>
- Televisions<sup>2</sup>
- Cooking Oil, used
- Fluorescent tubes and bulbs
- Furniture
- Latex & Oil based paint<sup>1</sup> - 5 gallons
- Motor Oil and Filters<sup>1</sup>
- Scrap Metal
- Sharps (must be inside a biohazard container)
- Small Household Appliances (like microwaves, radios, space heaters)
- Styrofoam, packing blocks only
- Tires (auto and pick-up truck only)<sup>2</sup>
- Wood, unpainted & untreated lumber



<sup>1</sup> A five-gallon limit per household, per month may apply.

<sup>2</sup> A fee may be charged for items such as: Refrigerators, tires, etc.

For more information, please call our Customer Service Department at **650-355-9000** or visit us online at [www.recologyofthecoast.com](http://www.recologyofthecoast.com).

# Important Resources

## Recology of the Coast

2305 Palmetto Ave  
Pacifica, CA 94044  
Ph: **650-355-9000**

[www.RecologyoftheCoast.com](http://www.RecologyoftheCoast.com)

Office Hrs:

Monday – Friday,  
7:30 am – 4:30 pm

## Pacifica Resource Center

**650-738-7470**

[www.pacresourcecenter.org](http://www.pacresourcecenter.org)

## Pacifica Freecycle Group

[http://groups.yahoo.com/group/Coastside\\_freecycle](http://groups.yahoo.com/group/Coastside_freecycle)

## San Mateo County Recycling & Compost Hotline

**888-442-2666**

[www.RecycleWorks.org](http://www.RecycleWorks.org)

## County of San Mateo HHW Program

The County of San Mateo provides a free HHW drop-off program. To schedule an appointment, call the automated appointment line at **650-363-4718** or visit [smchealth.org/hhw](http://smchealth.org/hhw).



## Pharmaceutical & Sharps Disposal

### Vitamins & Medications:

### Pacifica Police Department:

**2075 Coast Highway Monday – Friday from 8:30am – 5:00pm.** Look for the white confidential drop-off container.

Sharps (medical devices for self-injection or blood tests): **Recology of the Coast Recycling Yard** (see left for hours of operation).

For more information about Sharps and Pharmaceutical disposal visit <http://smchealth.org/hhw>

# 2015

## AUGUST 2015

Sun	Mon	Tue	Wed	Thu	Fri	Sat
						1
2	3	4	5	6	7	8
9	10	11	12	13	14	15
16	17	18	19	20	21	22
23	24	25	26	27	28	29
30	31					

## SEPTEMBER 2015

Sun	Mon	Tue	Wed	Thu	Fri	Sat
		1	2	3	4	5
6	7	8	9	10	11	12
13	14	15	16	17	18	19
20	21	22	23	24	25	26
27	28	29	30			

## OCTOBER 2015

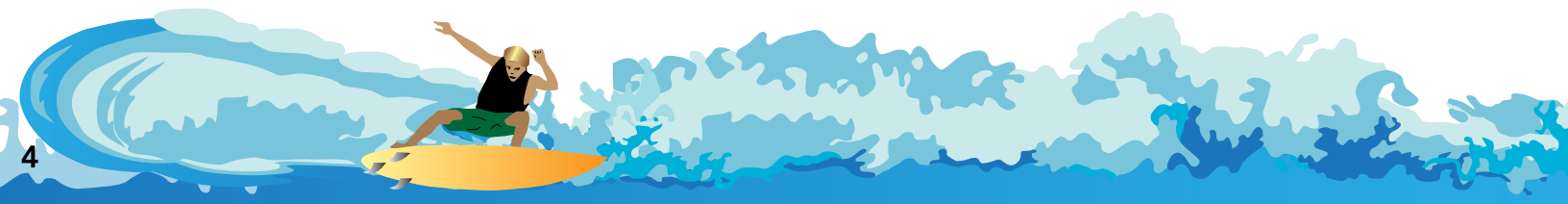
Sun	Mon	Tue	Wed	Thu	Fri	Sat
				1	2	3
4	5	6	7	8	9	10
11	12	13	14	15	16	17
18	19	20	21	22	23	24
25	26	27	28	29	30	31

## NOVEMBER 2015

Sun	Mon	Tue	Wed	Thu	Fri	Sat
1	2	3	4	5	6	7
8	9	10	11	12	13	14
15	16	17	18	19	20	21
22	23	24	25	26	27	28
29	30					

## DECEMBER 2015

Sun	Mon	Tue	Wed	Thu	Fri	Sat
		1	2	3	4	5
6	7	8	9	10	11	12
13	14	15	16	17	18	19
20	21	22	23	24	25	26
27	28	29	30	31		



# 2016 Recycle Collection Schedule

Your **blue** recycle cart is collected **every other week** on your regular garbage day. To determine if you are on the **YELLOW** or **BLUE** schedule, match the color listed next to your address on pages 6-7 to the Collection Calendar below.

## JANUARY 2016

Sun	Mon	Tue	Wed	Thu	Fri	Sat
					1	2
3	4	5	6	7	8	9
10	11	12	13	14	15	16
17	18	19	20	21	22	23
24	25	26	27	28	29	30
31						

## FEBRUARY 2016

Sun	Mon	Tue	Wed	Thu	Fri	Sat
	1	2	3	4	5	6
7	8	9	10	11	12	13
14	15	16	17	18	19	20
21	22	23	24	25	26	27
28	29					

## MARCH 2016

Sun	Mon	Tue	Wed	Thu	Fri	Sat
		1	2	3	4	5
6	7	8	9	10	11	12
13	14	15	16	17	18	19
20	21	22	23	24	25	26
27	28	29	30	31		

## APRIL 2016

Sun	Mon	Tue	Wed	Thu	Fri	Sat
					1	2
3	4	5	6	7	8	9
10	11	12	13	14	15	16
17	18	19	20	21	22	23
24	25	26	27	28	29	30

## MAY 2016

Sun	Mon	Tue	Wed	Thu	Fri	Sat
1	2	3	4	5	6	7
8	9	10	11	12	13	14
15	16	17	18	19	20	21
22	23	24	25	26	27	28
29	30	31				

## JUNE 2016

Sun	Mon	Tue	Wed	Thu	Fri	Sat
			1	2	3	4
5	6	7	8	9	10	11
12	13	14	15	16	17	18
19	20	21	22	23	24	25
26	27	28	29	30		

## JULY 2016

Sun	Mon	Tue	Wed	Thu	Fri	Sat
					1	2
3	4	5	6	7	8	9
10	11	12	13	14	15	16
17	18	19	20	21	22	23
24	25	26	27	28	29	30
31						

## AUGUST 2016

Sun	Mon	Tue	Wed	Thu	Fri	Sat
	1	2	3	4	5	6
7	8	9	10	11	12	13
14	15	16	17	18	19	20
21	22	23	24	25	26	27
28	29	30	31			

## SEPTEMBER 2016

Sun	Mon	Tue	Wed	Thu	Fri	Sat
				1	2	3
4	5	6	7	8	9	10
11	12	13	14	15	16	17
18	19	20	21	22	23	24
25	26	27	28	29	30	

## OCTOBER 2016

Sun	Mon	Tue	Wed	Thu	Fri	Sat
						1
2	3	4	5	6	7	8
9	10	11	12	13	14	15
16	17	18	19	20	21	22
23	24	25	26	27	28	29
30	31					

## NOVEMBER 2016

Sun	Mon	Tue	Wed	Thu	Fri	Sat
		1	2	3	4	5
6	7	8	9	10	11	12
13	14	15	16	17	18	19
20	21	22	23	24	25	26
27	28	29	30			

## DECEMBER 2016

Sun	Mon	Tue	Wed	Thu	Fri	Sat
				1	2	3
4	5	6	7	8	9	10
11	12	13	14	15	16	17
18	19	20	21	22	23	24
25	26	27	28	29	30	31

Pursuant to the Americans with Disabilities Act, those residents defined as disabled, and whose disability prevents their placing containers at the curb, shall have the option of placing their containers near their dwelling, visible from the curb. Recology of the Coast will pick up the refuse and recycling from this location or any other location suitable to both parties, and return the container to the same location. You must contact Recology of the Coast at 650-355-9000 to participate in this program.

# RECYCLING COLLECTION SCHEDULE

STREET	ADDRESS	DAY	WEEK
ACACIA CT	1-16	M	YELLOW
ADOBE DR	1319-1668	M	BLUE
ALCALA CT	4-35	W	BLUE
ALICANTE DR	1153-1290	W	BLUE
ALICANTE DR	1303-1396	M	YELLOW
ALISAL CT	4-36	TH	YELLOW
ALTA VISTA DR	652-996	F	YELLOW
ALVARADO AVE	1255-1292	W	BLUE
ALVISO CT	1-40	M	BLUE
AMAPOLA AVE	106-172	F	YELLOW
ANDORRA AVE	1-10	TU	YELLOW
ANDOVER DR	379-515	TH	YELLOW
ANGELITA AVE	104-297	F	YELLOW
ANZA DR	903-1111	TU	BLUE
ARAGON CT	1039-1055	M	BLUE
ARCADIA DR	103-145	F	BLUE
ARGUELLO BLVD	504-590	TU	BLUE
ARGUELLO BLVD	607-889	M	BLUE
ARLEEN WAY	703-796	W	YELLOW
ARROYO DR	207-279	TH	BLUE
ASPEN DR	1210-1347	TU	YELLOW
ATHENIAN WAY	412-433	F	BLUE
AURORA CT	25-40	F	YELLOW
AVALON DR	116-332	TH	BLUE
AVILA CT	1320-1336	M	YELLOW
BALBOA WAY	1107-1184	TU	BLUE
BALLY WAY	411-442	W	YELLOW
BANCROFT WAY	202-394	W	YELLOW
BANFF WAY	2-15	TU	YELLOW
BANYAN WAY	1008-1170	M	YELLOW
BARCELONA DR	1000-1180	W	BLUE
BARTON PLACE	1-37	W	BLUE
BAYBERRY CIRCLE	201-277	TH	YELLOW
BAYVIEW RD	105-171	TH	BLUE
BEACH BLVD	1669-1671	TH	YELLOW
BEACH BLVD	1785-2409	W	YELLOW
BEACHVIEW AVE	100	F	YELLOW
BEACHVIEW AVE	104-297	TH	YELLOW
BEAUMONT BLVD	129-671	W	YELLOW
BELFAST AVE	400-467	F	BLUE
BELLA VISTA	106-112	TH	YELLOW
BERENDOS AVE	104-268	F	YELLOW
BEVERLY PLACE	1-398	W	YELLOW
BIG BEND DR	602-1001	W	BLUE
BIG BEND DR	1010-1026	TU	BLUE
BIG SUR WAY	5-43	TU	BLUE
BIRCH LANE	82-120	W	YELLOW
BLACKBURN TERR	1-170	F	BLUE
BONITA AVE	131-239	F	YELLOW
BONNIE LANE	188-213	W	YELLOW
BOWER RD	808-862	M	BLUE
BRADFORD WAY	703-774	W	YELLOW
BRIGHTON RD	103-689	W	YELLOW
BROOKHAVEN CT	4-31	F	BLUE
BROOKS PLACE	2-15	W	BLUE
BRUCE ST	107-119	TH	BLUE
BRYCE CANYON	5-18	TU	BLUE
BUCKINGHAM WAY	333, 350	W	YELLOW
BUEL AVE	401-585	TH	BLUE
BUFFALO CT	2-47	M	YELLOW
BURNS CT	803-848	W	YELLOW
CADIZ CT	4-36	M	BLUE
CALAVERAS AVE	106-249	F	YELLOW
CALERA TERRACE	885-897	TH	BLUE
CANYON DR	500-712	TH	BLUE
CAPE BRETON CT	1-39	M	YELLOW
CAPE BRETON DR	723-871	M	YELLOW
CAPISTRANO AVE	1308-1336	TU	BLUE

STREET	ADDRESS	DAY	WEEK
CARLETON PLACE	4-21	W	BLUE
CARMEL AVE	1-185	W	YELLOW
CARMEL AVE	228-703	TH	BLUE
CASTRO CT	1348-1368	M	YELLOW
CATALINA AVE	101-292	F	BLUE
CATALINA AVE	296	TH	BLUE
CEDAR LANE	240	W	YELLOW
CELESTIAL CT	100	M	BLUE
CELIA CT	1-8	M	BLUE
CERVANTES WAY	1107-1189	TU	BLUE
CHANNING WAY	301-500	W	YELLOW
CHARING CROSS	224-343	W	YELLOW
CHESTER PLACE	340, 341, 398	TH	BLUE
CHICO CT	7-19	M	BLUE
CINDY WAY	704-776	W	YELLOW
CLARENDON RD	45-279	W	YELLOW
CLARIDGE DR	611-795	TH	BLUE
CLIFTON RD	206-372	W	YELLOW
COAST HWY	4895	F	BLUE
CONCHITA CT	7-16	TH	BLUE
CONNEMARA DR	1-15	TH	BLUE
COPELAND AVE	400-499	TH	BLUE
CORAL RIDGE DR	301-441	F	BLUE
CORDOVA CT	736-796	F	YELLOW
CORONA DR	674-944	F	YELLOW
CRAGMONT CT	2-26	TU	YELLOW
CRANHAM CT	2-36	TU	YELLOW
CRATER LAKE WAY	1-28	TU	YELLOW
CRENSHAW CT	5-121	F	BLUE
CRESPI DR	565,570	F	BLUE
CRESPI DR	660-796	TU	BLUE
CRESPI DR	803-890	M	BLUE
CRESPI DR	904-1220	W	BLUE
CRESPI DR	1223-1545	TU	YELLOW
CRESTMOR CIR	107-265	TH	YELLOW
CULLEN DR	416-496	W	YELLOW
CUTTY COURT	300-320	W	YELLOW
CYPRESS ST	101-133	TH	YELLOW
DANMANN AVE	1201-1244	F	BLUE
DARDANELLE AVE	1-250	F	YELLOW
DE SOLO DR	1104-1191	TU	BLUE
DE SOLO DR	1203-1495	M	YELLOW
DEL MAR AVE	407-540	TH	BLUE
DEL MONTE DR	101-140	F	BLUE
DELL RD	803-868	M	YELLOW
DESPIO CT	4-56	W	BLUE
DOLPHIN DR	527-560	TU	BLUE
DONALDSON AVE	402-481	TH	BLUE
DONDEE WAY	403,404	F	BLUE
DRIFTWOOD CIR	27-85	TU	YELLOW
DRIFTWOOD CT	10-90	TU	YELLOW
DULLES CT	1142-1156	TU	YELLOW
DURAN CT	4-35	W	BLUE
EASTLAKE AVE	5-87	W	YELLOW
EASTRIDGE CIR	2-207	F	BLUE
EBKEN ST	395-505	TH	BLUE
EDGEWATER AVE	507-840	TH	BLUE
EDGEWOOD DR	103-296	F	BLUE
EDNA LANE	378-395	W	YELLOW
EL DORADO DR	201-285	F	BLUE
ELDER LANE	61,77	W	YELLOW
ELK CT	1-19	M	YELLOW
ELM CT	2-20	M	YELLOW
ENCANTO WAY	1103-1190	TU	BLUE
ESCALERO AVE	1003-1088	F	YELLOW
ESCALERO AVE	1095,1096	M	YELLOW
ESCALERO AVE	1107-1295	M	BLUE
ESPLANADE	527-567	TU	BLUE

STREET	ADDRESS	DAY	WEEK
ESSEX WAY	120-192	F	BLUE
EVERGLADES DR	1000-1326	TU	BLUE
FAIRWAY DR	268-396	W	YELLOW
FARALLON AVE	290-634	W	YELLOW
FASSLER AVE	901-1166	TU	YELLOW
FERN AVE	705-770	F	YELLOW
FERNANDEZ WAY	1119-1190	TU	BLUE
FIRECREST AVE	304-495	TH	YELLOW
FLORES DR	1305-1595	M	YELLOW
FOOTHILL DR	604-673	TH	YELLOW
FOREST LAKE DR	600-668	TH	YELLOW
FOREST PARK DR	201-331	F	BLUE
FRANCES AVE	48-90	W	YELLOW
FRANCISCO BLVD	2044-2584	W	YELLOW
FRANZ CT	98-102	F	YELLOW
FREMONT AVE	201-314	W	YELLOW
FREMONT AVE	340-540	TH	BLUE
FULLERTON AVE	430-500	TH	BLUE
GALVEZ DR	1107-1295	M	BLUE
GARDEN CT	312-328	W	YELLOW
GATEWAY DR	22-290	F	BLUE
GENEVIEVE AVE	307-396	F	YELLOW
GLACIER AVE	1020-1274	W	BLUE
GLASGOW DR	408-496	TH	YELLOW
GLENOCOURT WAY	303-389	TH	YELLOW
GOLDEN BAY DR	201-235	F	BLUE
GOODMAN RD	403-519	TH	BLUE
GORDON WAY	120-165	W	YELLOW
GRANADA DR	1005-1090	F	YELLOW
GRAND AVE	1304-1580	F	BLUE
GRAND TETON DR	1005-1198	TU	BLUE
GREENWAY DR	203-396	W	YELLOW
GRIFFIN AVE	400-485	TH	BLUE
GYPSY HILL RD	1,2,8	F	YELLOW
HAMILTON CT	2-32	F	BLUE
HARVEY WAY	407-439	TH	BLUE
HEATHCLIFF DR	303-589	TH	YELLOW
HEATHER CT	600-690	TH	BLUE
HERMOSA AVE	1236-1396	M	YELLOW
HIAWATHA AVE	143-231	F	YELLOW
HIBBERT CT	1-24	TH	BLUE
HICKEY BLVD	103,107	W	YELLOW
HICKEY BLVD	527-675	TH	YELLOW
HIGGINS WAY	1585-1689	M	BLUE
HILLSIDE DR	201-293	F	YELLOW
HILTON LANE	146	W	YELLOW
HILTON WAY	107-183	W	YELLOW
HINTON RANCH RD	1,2	F	YELLOW
HOLIDAY CT	2-23	F	BLUE
HORIZON WAY	307-374	TH	YELLOW
HUMBOLDT CT	1-48	TU	YELLOW
IDLEWILD CT	1-39	TH	YELLOW
IMPERIAL DR	313-716	TH	YELLOW
INVERNESS DR	303-595	TH	YELLOW
IRIS CT	821-833	M	BLUE
JOHNSON AVE	407-539	TH	BLUE
JUANITA AVE	100-298	F	YELLOW
JUDSON PLACE	2-34	W	BLUE
KATHLEEN CT	7-127	TU	BLUE
KAVANAUGH WAY	204-290	TH	YELLOW
KEITH AVE	306-395	F	YELLOW
KENDELL CT	1-21	TU	BLUE
KENT ROAD	110-312	F	BLUE
KINGS CANYON	6-38	TU	BLUE
KOHALA AVE	300-495	W	YELLOW
KOHALA AVE	560-595	TH	YELLOW
LA MIRADA DR	944-990	F	YELLOW
LADERA WAY	659-689	F	YELLOW

Your **BLUE** recycling cart is collected **every other week** on your regular garbage day. To find your recycling schedule, match the color listed next to your address with the Collection Calendar on page 4.

STREET	ADDRESS	DAY	WEEK
LAKEVIEW AVE	221-550	W	YELLOW
LASSEN AVE	1037,1095	TH	BLUE
LAUREN AVE	202-296	F	YELLOW
LERIDA WAY	1204-1298	TU	YELLOW
LERIDA WAY	1301-1351	M	YELLOW
LERIDA WAY	1361-1379	TU	YELLOW
LEWIS LANE	402-538	TU	BLUE
LINCOLN PLACE	908-949	W	BLUE
LINDA MAR BLVD	604-903	M	BLUE
LINDA MAR BLVD	1124-1296	M	YELLOW
LINDA MAR BLVD	1311-1696	W	BLUE
LISA CT	837-853	M	BLUE
LIVINGSTON AVE	1331-1475	F	BLUE
LOCKHAVEN DR	608-790	TH	BLUE
LOMA VISTA TERR	300-700	TH	BLUE
LOMOND DR	412-496	TH	YELLOW
LONE MOUNTAIN CT	7-44	TH	YELLOW
LORRY LANE	104-196	TH	YELLOW
LUNDY WAY	704-796	W	YELLOW
LUNETTA AVE	200-495	W	YELLOW
LYNBROOK DR	361-501	TH	YELLOW
MADEIRA DR	1403-1596	TU	BLUE
MADRID CT	1380-1392	M	YELLOW
MADRONE WAY	1	W	BLUE
MAGELLAN DR	301-432	F	BLUE
MAITLAND RD	411	F	YELLOW
MALAVEAR CT	1-30	M	BLUE
MANOR DR	203-620	TU	YELLOW
MANOR DR	625-690	TH	BLUE
MANZANITA DR	1028-1200	TU	YELLOW
MARINA DR	204-296	W	YELLOW
MARVILLA CIRCLE	201-270	M	BLUE
MASON DR	1107-1187	TU	YELLOW
MC KINNEY AVE	103-192	TH	BLUE
MELROSE CT	2-20	F	BLUE
MILAGRA CT	7-12	TH	BLUE
MILAGRA DR	203-520	TH	BLUE
MILLER AVE	503-635	TH	BLUE
MINA LANE	303-396	TH	YELLOW
MINERVA AVE	140-229	F	YELLOW
MIRADOR TERRACE	990-1195	TH	BLUE
MIRANDA CT	1554-1570	TU	YELLOW
MISTY HARBOUR CT	1, 5	TH	BLUE
MOANA WAY	224-795	W	YELLOW
MODOC PLACE	204-251	F	YELLOW
MONTE VERDE DR	900-1084	M	BLUE
MONTECITO AVE	1-175	W	YELLOW
MONTEREY RD	210-264	W	YELLOW
MONTEREY RD	268,300, 400	TH	YELLOW
MONTEREY RD	303-488	W	YELLOW
MONTEREY RD	498	TU	YELLOW
MONTEREY RD	504-554	TH	BLUE
MONTEZUMA DR	607-890	M	YELLOW
MOON GATE CT	4-17	F	BLUE
MOONRAY COURT	2,6	TH	BLUE
MUIR WAY	2-19	TU	YELLOW
NAOMI AVE	180-229	F	YELLOW
NATAQUA AVE	104-223	F	YELLOW
NAVARRE DR	624-685	M	YELLOW
NELSON AVE	207-376	TH	BLUE
NORFOLK DR	325-493	TU	BLUE
NORIEGA WAY	704-796	M	YELLOW
NORTH ROSITA CT	1011-1019	M	BLUE
OAKWOOD CT	1212,1228	M	YELLOW
ODDSTAD BLVD	703-725	W	BLUE
ODDSTAD BLVD	768-1239	TU	YELLOW
ODDSTAD BLVD	1245-1364	M	YELLOW
OLD COUNTY RD	425,450	F	BLUE

STREET	ADDRESS	DAY	WEEK
OLYMPIAN WAY	110-390	F	BLUE
ONEONTA DR	501-635	F	YELLOW
ORINDA ST	16	F	YELLOW
ORTEGA CT	3-31	F	YELLOW
OUTLOOK HEIGHTS CT	201-320	TH	BLUE
OVIEDO CT	8-72	W	BLUE
PACIFIC AVE	115-499	W	YELLOW
PACIFIC VIEW DR	301-328	TH	BLUE
PALMETTO AVE	100	F	BLUE
PALMETTO AVE	200-224	M	BLUE
PALMETTO AVE	528-560	TU	BLUE
PALMETTO AVE	900-1614	TH	YELLOW
PALMETTO AVE	1711-2338	W	YELLOW
PALMETTO AVE	4955-5094	F	BLUE
PALOMA AVE	1-184	TH	YELLOW
PALOMA AVE	234-593	TH	BLUE
PALOU DR	1107-1195	M	BLUE
PANORAMA CT	100-176	TH	BLUE
PARADISE DR	110-142	F	BLUE
PARK PACIFICA	901-992	W	BLUE
PARK PACIFICA	1010-1299	TU	BLUE
PARKVIEW CIRCLE	621-694	TH	YELLOW
PARKVIEW COURT	661-697	TH	YELLOW
PASEITO TERRACE	907-919	TH	BLUE
PERALTA RD	1127-1285	M	BLUE
PERALTA RD	1307-1416	M	YELLOW
PEREZ DR	1400-1600	M	YELLOW
PERRY AVE	404-543	TH	BLUE
PICARDO CT	3-28	TU	BLUE
PIEDMONT AVE	265-340	F	YELLOW
PILAR PLACE	903-908	TH	BLUE
PINEHAVEN WAY	203-295	W	YELLOW
PIO PICO WAY	2-23	W	BLUE
POINT REYES WAY	1-41	TU	BLUE
POPLAR AVE	ODD	M	YELLOW
POPLAR AVE	EVEN	TU	YELLOW
PRAIRIE CREEK	702-854	W	BLUE
RAINIER AVE	1001-1260	W	BLUE
RAMONA AVE	162-222	F	YELLOW
RANDOLF PLACE	1-13	W	BLUE
REDWOOD WAY	1204-1355	M	YELLOW
REGINA WAY	910-986	W	BLUE
REICHLING AVE	207-375	F	YELLOW
REINA DEL MAR	162-955	F	YELLOW
RESSA RD	305-388	W	YELLOW
RIDGEWAY DR	500-590	W	YELLOW
RIO VISTA DR	910-1095	M	BLUE
ROBERTS RD	207-479	F	YELLOW
ROCKAWAY BEACH	270	W	BLUE
ROCKAWAY BEACH	365-897	TH	BLUE
ROSITA RD	797-1190	M	BLUE
ROSITA RD	1204-1220	M	YELLOW
ROSITA RD	1230-1689	TU	YELLOW
RUTLAND DR	540,541	F	BLUE
SACRAMENTO TERR	900-960	TH	BLUE
SALADA AVE	2-168	W	YELLOW
SAN JOSE AVE	15-184	W	YELLOW
SAN PABLO TERR	323-575	TH	BLUE
SAN PEDRO AVE	204-384	F	BLUE
SANTA MARIA AVE	8-179	W	YELLOW
SANTA ROSA AVE	1-184	W	YELLOW
SCENIC WAY	200,201	W	YELLOW
SEA BREEZE CT	2-18	F	BLUE
SEA HAVEN CT	3-12	F	BLUE
SEA SPRAY CT	506-565	TH	BLUE
SEAFORTH CT	344-368	W	YELLOW
SEASIDE DR	204-390	W	YELLOW
SEQUOIA WAY	1-18	TU	YELLOW

STREET	ADDRESS	DAY	WEEK
SERENA DR	709-996	F	YELLOW
SERRA DR	1403-1495	M	YELLOW
SEVILLE DR	1103-1284	W	BLUE
SHARON WAY	12	TH	YELLOW
SHARP PARK RD	601-657	F	YELLOW
SHASTA LANE	22-36	W	YELLOW
SHEILA LN	1114-1245	M	BLUE
SHELL ST	104-196	TH	BLUE
SHENANDOAH WAY	1-21	TU	YELLOW
SHERIDAN PLACE	3-12	W	BLUE
SHORESIDE	69-315	F	BLUE
SHOREVIEW DR	104-296	TH	BLUE
SHORT ST	104	W	YELLOW
SIERRA TERRACE	949	TH	BLUE
SILVIA CT	861-887	M	BLUE
SKYRIDGE DR	800-897	TH	BLUE
SOLANO DR	1303-1395	M	YELLOW
SOUTH ROSITA CT	1012-1040	M	BLUE
SOUTHMOOR DR	603-695	TH	BLUE
SPRING ST	7	TH	BLUE
SPRINGDALE DR	201-210	F	BLUE
SPRINGWOOD WAY	1203-1241	M	YELLOW
SPRUCE CT	3-40	TU	YELLOW
ST LAWRENCE CT	704-733	W	BLUE
ST LAWRENCE DR	801-817	W	BLUE
STANDISH RD	803-899	M	YELLOW
STANLEY AVE	103-297	F	BLUE
STERLING AVE	202-295	F	BLUE
SUNSET CT	205-228	TH	BLUE
SUNSHINE DR	105-295	F	BLUE
SURF ST	104-196	TH	BLUE
SUSSEX WAY	135-170	F	BLUE
SYCAMORE ST	299-505	TH	YELLOW
TALBOT AVE	401-722	TH	BLUE
TAPIS WAY	1103-1116	W	BLUE
TERRA NOVA BLVD	1100-1567	TU	YELLOW
TIMBERHILL CT	4-59	TH	YELLOW
TIOGA WAY	1-22	TU	YELLOW
TOLEDO CT	1632-1690	W	BLUE
TRANQUILITY COURT	1-8	TH	BLUE
TROGLIA TERRACE	100-200	TH	BLUE
URSULA AVE	711-793	F	YELLOW
VALDEZ WAY	1507-1556	TU	YELLOW
VALENCIA WAY	1003-1163	F	YELLOW
VALLECITO LANE	104-115	F	YELLOW
VALLEJO TERR	800-971	TH	BLUE
VALLEYWOOD CT	1,2,3	M	YELLOW
VEGA CT	1-29	TU	YELLOW
VENTURA CT	3-16	TU	YELLOW
VERONA AVE	169-253	F	YELLOW
VICTORIA WAY	1522-1550	TH	YELLOW
VIEW POINT CT	308-368	TH	BLUE
VIEW WAY	1046-1096	TU	YELLOW
VIEWRIDGE DR	605-663	TH	BLUE
VISTA MAR AVE	403-559	TH	BLUE
VISTA MONTARA	833-867	M	BLUE
WATERFORD ST	290-367	W	YELLOW
WAVERLY PLACE	596-600	TH	YELLOW
WEST AVALON DR	101-125	TU	BLUE
WESTCLIFF CT	2-20	F	BLUE
WINONA AVE	160-225	F	YELLOW
WINWOOD AVE	214-395	W	YELLOW
WOODROW PLACE	2-22	W	BLUE
YELLOWSTONE WAY	3-27	TU	BLUE
YOSEMITE DR	915-949	TU	YELLOW
YOSEMITE DR	1010-1094	TU	BLUE
ZAMORA DR	991-1046	F	YELLOW





2305 Palmetto Ave  
Pacifica, CA 94044



PRST STD  
U.S. Postage  
**PAID**  
Permit No. 63  
Pacifica, CA 94044

## Bulky Goods Pick-Up Program - Three (3) per Calendar Year

Residents in single-family, duplexes and triplexes are entitled to 3 free curbside collections per calendar year.

Each collection is limited to either 5-32 gallon bags OR 1 large item no longer than 6 feet and no heavier than 200 pounds. If you wish to use all your collections at one time, you may request it when you place your order.

This service is offered by appointment only and is subject to availability. Pick-ups are non-transferable and cannot be carried over from year to year. **To avoid a return trip fee**, item(s) must be curbside/at the street by 6am for pick-up. Driver will NOT remove item(s) from inside your home.

**Seniors:** If you need help, please call our office the day before your collection and we will send someone to help bring your items to the curb.

For more information or to schedule a collection, please call **650-355-9000**.

**Unacceptable items** include green waste, tree trunks, dirt, rock, concrete, hazardous waste and Construction and Demolition (C & D) debris.

**NOTE: Please DO NOT use your carts in lieu of bags or boxes for disposal.** Weight limits may apply and acceptability of items are up to the discretion of the driver.

**ALL 2015 BULKY ITEM PICK UPS MUST BE SCHEDULED NO LATER THAN DECEMBER 10TH.**

### DEBRIS BOX SERVICE

Recology of the Coast is the exclusive debris box hauler for the City of Pacifica. Call before 12pm Mon – Fri for same day service. Payment due at time of order. Construction and Demolition (C & D) Recycling Ordinance documentation is available upon request – please request at time of order. Recology of the Coast is not liable for damage done to your driveway/property from use of debris box. Owner/Renter/Occupant accepts responsibility should damage occur.

Debris boxes cannot contain hazardous waste, e-waste, universal waste, toxic materials, explosives, fuel, oil, paints, solvents, chemicals, asbestos, tires, refrigerators, air conditioners, computer monitors or televisions.

Due to new disposal site regulations, the following items cannot be placed in the debris box: sofas, loveseats, mattresses, box springs and overstuffed chairs. **Extra charges will be applied if these items are included in a debris box rental.**

### Life Line Low Income Requirements

To qualify for the Life Line program, you must be enrolled in PG&E's CARE Program and utilize only 1 – 20 gallon garbage cart each month. CARE income restrictions are below:

Number of Persons in Household	Annual income
1 - 2	\$31,860
3	\$40,180
4	\$48,500
5	\$56,820
For each additional person, add:	\$ 8,320

If you meet the requirements above, please provide a copy of your PG&E bill showing enrollment in the CARE Program to Customer Service and call **650-355-9000** or visit [www.recologyofthecoast.com](http://www.recologyofthecoast.com).

### Recology of the Coast Payment Options

Online – [www.recologyofthecoast.com](http://www.recologyofthecoast.com)

Phone – 650-355-9000

In Person – Office, 2305 Palmetto Ave.